

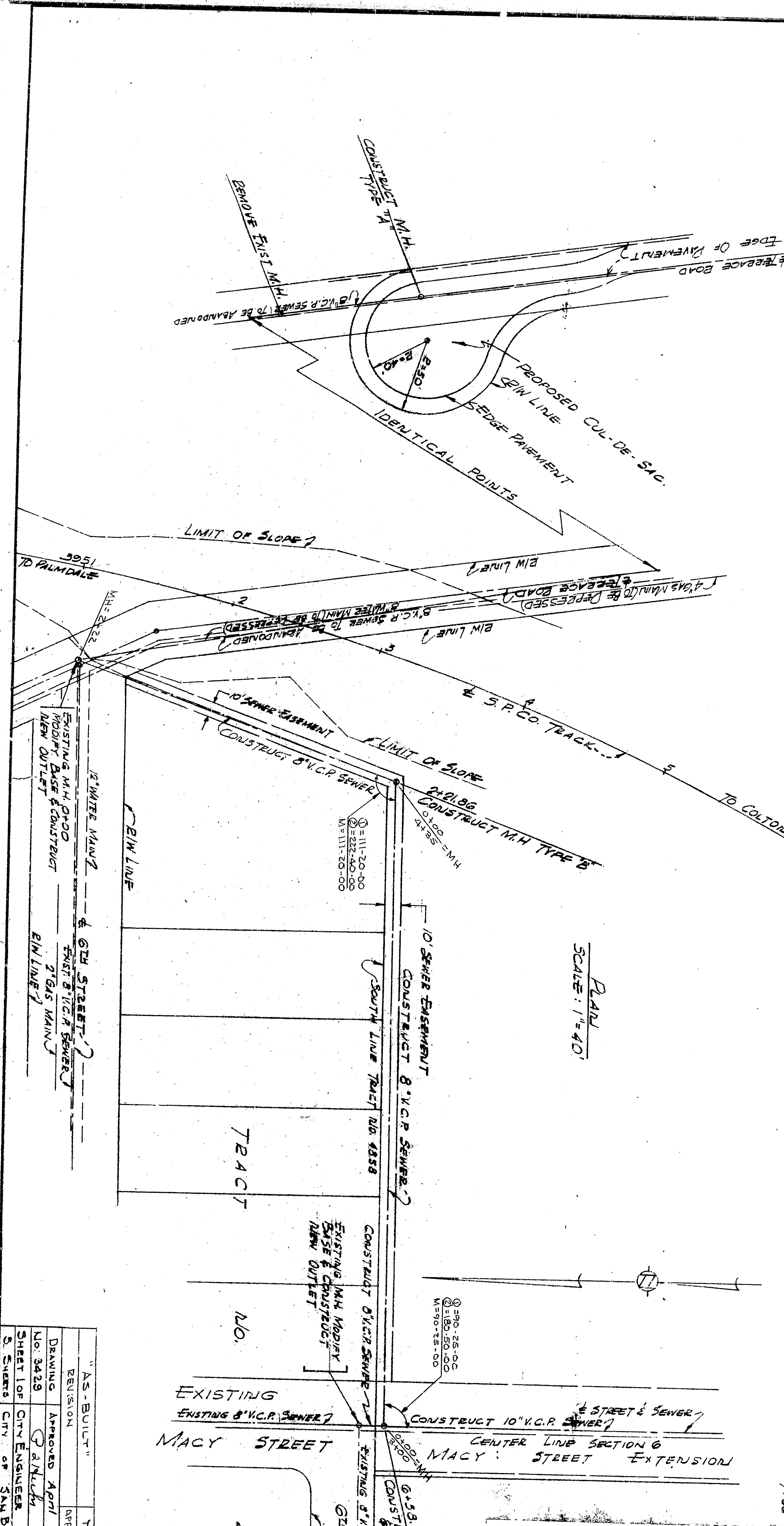
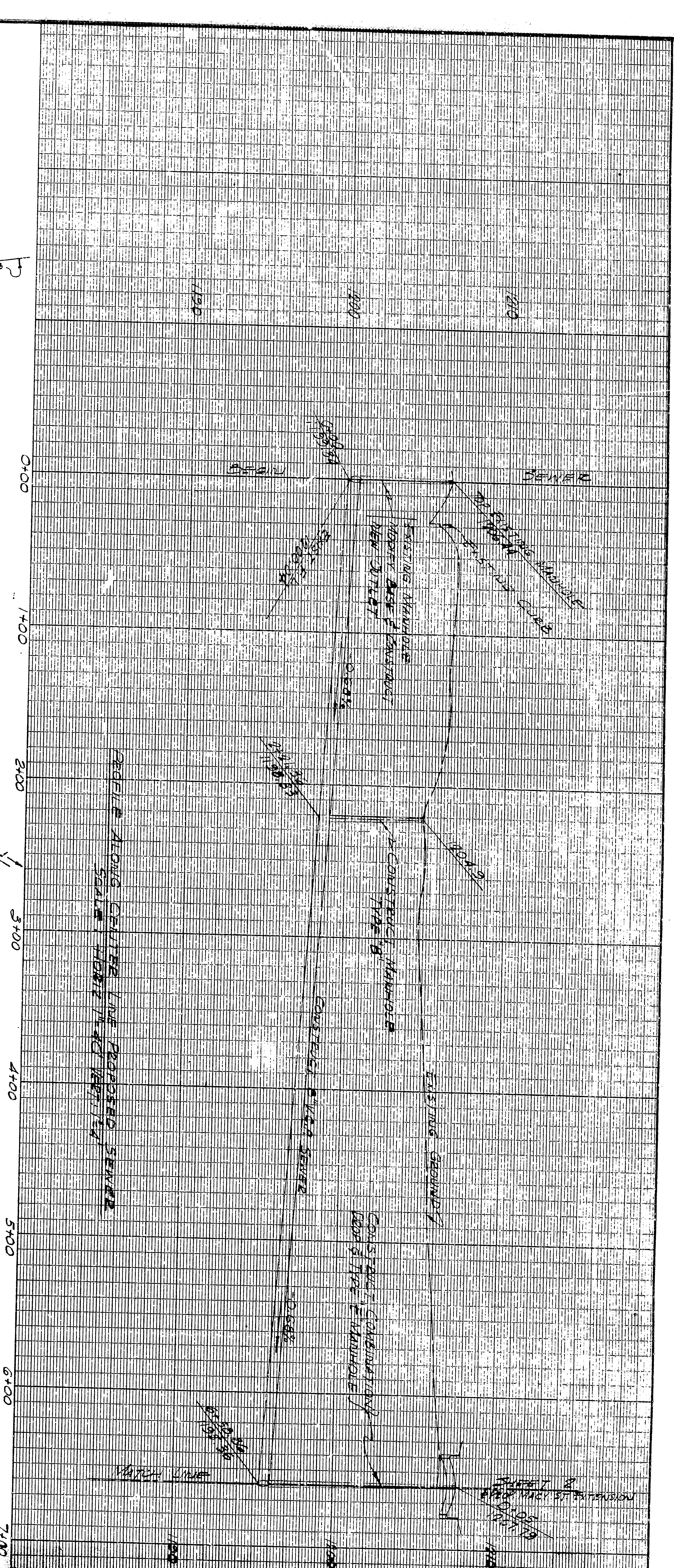
REVISION	DATE	BY	CHKD
AS-BUILT	7/24/66		
APPROVED	APR 7, 1966		
DRAWING	APPROVED		
NO. 3429			
SHEET 1 OF 2 CITY ENGINEERS 13052 P.C.E.			
S. SHEETS CITY OF SAN DIEGO			

SOUTHERN PACIFIC COMPANY
 BALDALE - COLTON CUT OFF
 SEWER LINE CONSTRUCTION BETWEEN
 TERRACE ROAD & DAULTY AVENUE
 SCALE: AS SHOWN
 REV. FEB. 21, 1966
 REV. MARCH 24, 1966
 C. E.
 5/10/66

NOTE: ALL ELEVATIONS BASED ON
 S.P.C.O. DATUM
 B.M. SCREEN IN N.W. CORNER
 OF 6TH STREET & TERRACE RD.
 S.P.C.O. ELEV. 1006.19
 CITY OF S.D. ELEV. 1005.79

ITEM NO.	ITEM	QUANTITY
1.	6" VITRIFIED CLAY PIPE	699 LIN. FT.
2.	10" VITRIFIED CLAY PIPE	439 LIN. FT.
3.	BRICK OR PRECAST RETROFILLED MANHOLES	18 EACH
4.	21" CORRUGATED IRON PIPE OR SMOOTH STEEL PIPE	165 LIN. FT.
5.	ASPHALT CONCRETE	9.5 TONS
6.	AGGREGATE BASE	15.0 TONS

- GENERAL NOTES
- ALL WORK EXECUTED ON THESE PLANS SHALL BE DONE IN ACCORDANCE WITH APPLICABLE PROVISIONS OF SPECIAL PROVISIONS NO. 3429 AND STANDARD SPECIFICATION NO. 2271, LATEST EDITION, & STANDARD DRAWING NO. 3321, OR FILE IN OFFICE OF THE CITY ENGINEER. THE MAXIMUM WIDTH OF TRENCH EXCAVATION (MEASURED AT TOP OF THE PIPE) SHALL BE 16" (9" ON EACH SIDE) MORE THAN THE OUTSIDE DIAMETER OF PIPE.
 - IF THE MAXIMUM IS EXCEEDED, THE CONTRACTOR SHALL, AT HIS OWN EXPENSE, INSTALL CONCRETE ENCASEMENT, UNLESS THE ENGINEER, BY WRITTEN DIRECTION, PERMITS THE USE OF OTHER SPECIAL METHODS OF PROTECTING.
 - LOCATIONS OF UNDERGROUND UTILITIES AS SHOWN ON THESE PLANS ARE NOT TO BE ASSUMED AS EITHER EXACT OR COMPLETE, AND THE SOUTHERN PACIFIC COMPANY AND THE CITY OF SAN DIEGO ASSUME NO RESPONSIBILITY FOR ERRORS OR OMISSIONS IN SHOWING SUCH LOCATIONS. THE CONTRACTOR SHOULD VERIFY OR ASCERTAIN THE LOCATION OF ALL UNDERGROUND UTILITIES, AND HE MUST ASSURE ALL LIABILITY FOR DAMAGES CAUSED BY HIS OPERATION.
 - MANHOLES TO BE CONSTRUCTED 6" BELOW GRADE ON DIRT STREETS.
 - MANHOLE STEPS SHALL NOT BE REQUIRED. MANHOLE FRAMES AND COVERS SHALL BE ALUMINUM FOUNDRY NO. A-1170 OR APPROVED EQUAL.
 - SEWER MAINS SHALL BE CONSTRUCTED OF EITHER "WEDGE-LOCK" "SPREAD SEAL" OR "HAND-SEAL" VITRIFIED CLAY PIPE.
 - MANHOLE COVERS TO BE ADJUSTED TO GRADE AFTER COMPLETION OF PAVING. (SEE C.E. DRAWING 3462Z, SHEETS 1-3)



GENERAL NOTES

- ALL WORK EXECUTED ON THESE PLANS SHALL BE DONE IN ACCORDANCE WITH APPLICABLE PROVISIONS OF SPECIAL PROVISIONS NO. 3429 AND STANDARD SPECIFICATION NO. 2271, LATEST EDITION, & STANDARD DRAWINGS NO. 2321, OR FILE IN OFFICE OF THE CITY ENGINEER. THE MAXIMUM WIDTH OF TRENCH EXCAVATION (MEASURED AT TOP OF THE PIPE) SHALL BE 16" (9" ON EACH SIDE) MORE THAN THE OUTSIDE DIAMETER OF PIPE.
- IF THE MAXIMUM IS EXCEEDED, THE CONTRACTOR SHALL, AT HIS OWN EXPENSE, INSTALL CONCRETE ENCASEMENT, UNLESS OTHERWISE SPECIFIED BY WRITTEN DIRECTION, PERMITS THE USE OF OTHER SPECIAL METHODS OF REDDING.
- LOCATIONS OF UNDERGROUND UTILITIES AS SHOWN ON THESE PLANS ARE NOT TO BE ASSUMED AS EITHER EXACT OR COMPLETE, AND THE SOUTHERN PACIFIC COMPANY AND THE CITY OF SAN BERNARDINO ASSUME NO RESPONSIBILITY FOR ERRORS OR OMISSIONS IN SHOWING SUCH LOCATIONS. THE CONTRACTOR SHOULD VERIFY OR ASCERTAIN THE LOCATION OF ALL UNDERGROUND UTILITIES, AND HE MUST ASSURE ALL LIABILITY FOR DAMAGES CAUSED BY HIS OPERATION.
- MANHOLES TO BE CONSTRUCTED 6" BELOW GRADE ON DIRT STREETS.
- MANHOLE STEPS SHALL NOT BE REQUIRED. MANHOLE FRAMES AND COVERS SHALL BE ALUMINUM FOUNDRY NO. A-1170 OR APPROVED EQUAL.
- SEWER MAINS SHALL BE CONSTRUCTED OF EITHER "WEDGE-LOCK" "SPREAD SEAL" OR "HAND-SEAL" VITRIFIED CLAY PIPE.
- MANHOLE COVERS TO BE ADJUSTED TO GRADE AFTER COMPLETION OF PAVING. (SEE C.E. DRAWING 3462Z, SHEETS 1-3)

ITEM NO.	ITEM	QUANTITY
1.	8" VITRIFIED CLAY PIPE	699 LIN. FT.
2.	10" VITRIFIED CLAY PIPE	439 LIN. FT.
3.	BRICK OR PRECAST RETROFILLED MANHOLES	18 EACH
4.	21" CORRUGATED IRON PIPE OR SMOOTH STEEL PIPE	165 LIN. FT.
5.	ASPHALTE CONCRETE	9.5 TONS
6.	AGGREGATE BASE	15.0 TONS

NOTE: ALL ELEVATIONS BASED ON S.P.C.O. DATUM

B.M. SCREEN IN N.W. CORNER OF 6TH STREET & TERRACE RD. S.P.C.O. ELEV. 1806.19 CITY OF S.B. ELEV. 1205.79

REVISIONS:

REVISION	DATE	BY	APP. BY
AS-BUILT	7/24/66		
APPROVED	APR 7, 1966		

DRAWING NO. 3429
SHEET 1 OF 2
CITY ENGINEER, 18052 PCE.
S. SHEETS, CITY OF SAN BERNARDINO

SOUTHERN PACIFIC COMPANY
BALDALE - COLTON CUT OFF
SEWER LINE CONSTRUCTION BETWEEN
TERRACE ROAD & DAULTY AVENUE
SCALE: AS SHOWN
REV. FEB. 21, 1966
REV. MARCH 24, 1966
C. E.
3/26/66
3/26/66

